

An abstract architectural photograph featuring a series of parallel diagonal lines in the upper left corner, a solid horizontal band across the middle, and a light gray background. The text is centered in the lower half.

C H A R L E S M A T Z

CURATORIAL OUTCOMES

ENGINEERING AND DESIGN OF ALL CURATORIAL ELEMENTS

for

Museums
Galleries
Collectors
Artists
Designers

www.curatorialoutcomes.com

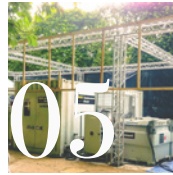


RESOURCES AND CAPABILITIES



01

**Rigging
Anchoring
Suspension Systems**



05

**Electrical and
Power
Distribution**



02

**Industrial Design
Detailing**



06

**Communications
Control
Systems**



03

**Base Building |
Structural
Engineering Design**



07

**Mechanical
System Design**



04

Lighting Design



08

**Pyrotechnic
Design**



01

RIGGING|ANCHORING SUSPENSION SYSTEMS

We create, for manufacture and distribution, rigging, anchoring, and suspension solutions. Our approach is tailor-made, administering all installations, generating documents, and verifying calculations.

We perform Site Inspections, Conduct Structural Analysis, Roof Safety Analysis, and the Detailing of Connections.

We recommend Safety Systems; Pre-schematic and Schematic Layouts.

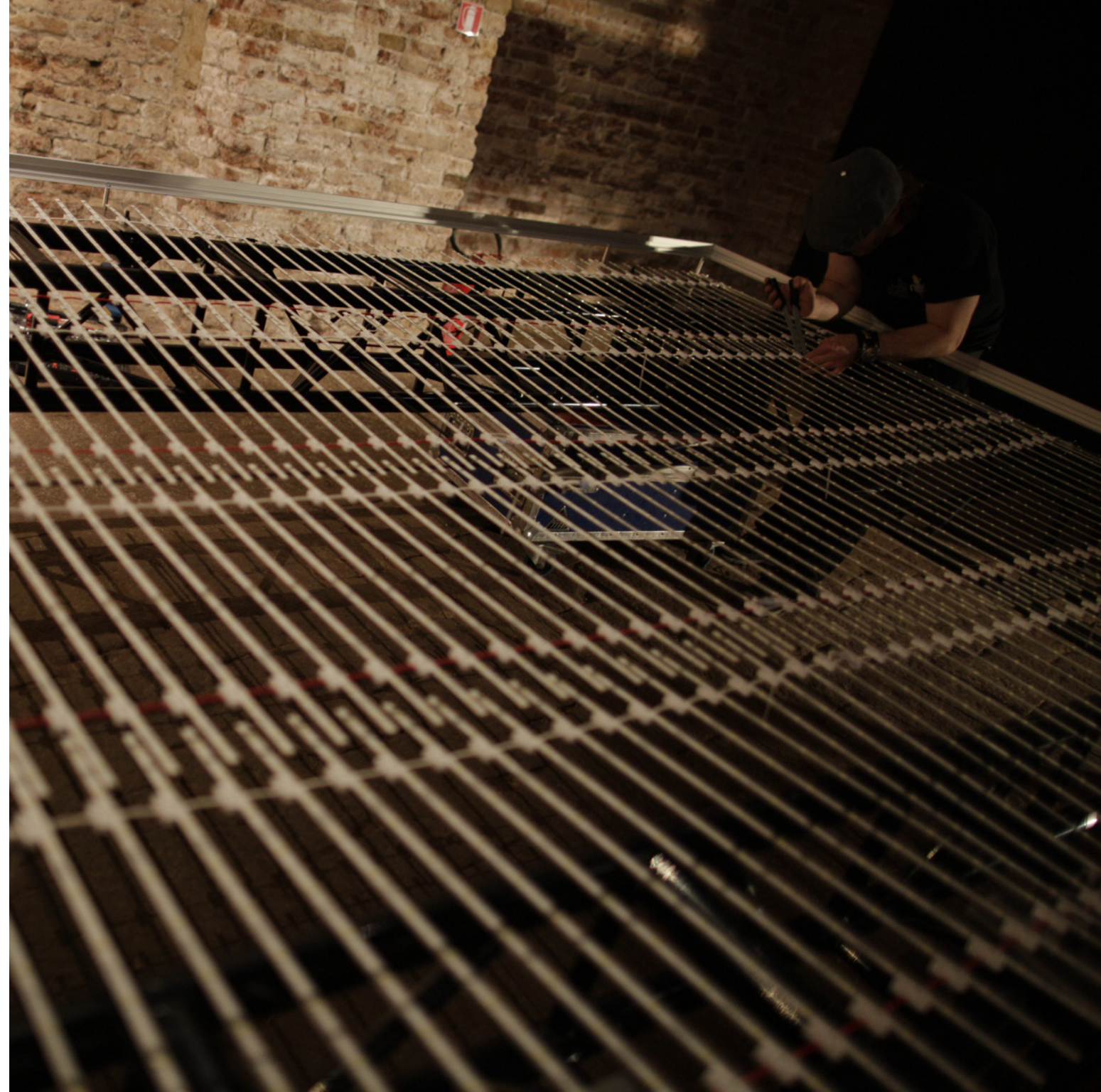
We develop Engineered Design solutions, vet System Rigging Sequencing and Protocols, Perform testing, and acquire certifications for new and existing systems.



02

INDUSTRIAL DESIGN DETAILING

Experienced in building Art installations, setting up complex exhibitions, and transforming ideas of artists into tangible outcomes. Curatorial Outcomes forms varied solutions towards permanent connection and support challenges; from ideation, conceptualization, to final realization. Three dimensional and 1:1 scale prototypes are devised and made—including explorations of surface qualities, color, materials and finishes—for manufacture.



03

BASE BUILDING STRUCTURAL ENGINEERING DESIGN

We find creative solutions to complex base-building structural design challenges. Our experienced structural engineers, specialize in exhibition design and building art installation solutions. We help test techniques and analyze materials, methods, costs, risks, and sustainability for the work to synchronize the approach with an eye on aesthetics. Working with an experienced team of consultants, we enable the artist's vision without compromising practicality and efficiency. Our work includes pre-schematic assessments, ground/context investigation, and risk assessment.



04

LIGHTING DESIGN

We value the impact of Lighting Design to heighten art works. Our multi-disciplinary team creates bespoke luminaries, fits them to projects , and commissions them into service. We generate daylight massing analysis. We develop lighting strategies and create real-time and 3D visualizations shown integrated with artworks..Documents include: lighting pre-schematics and schematics, scheme outlines and cost feasibility, monitoring, including programming of control systems, and focusing of luminaries.



05

ELECTRICAL AND POWER DISTRIBUTION

Using advanced modeling techniques we assess the requirements of electrical and power distribution. We create comfortable and efficient microclimates protecting and sustaining the art piece housed within them; assessing the current available resources, we work to bridge the gap capturing the concepts of the artist. The process of assessing and delivering the resources vof efficient electrical and power distribution, forms an integral part towards creating a successful schematic proposal.

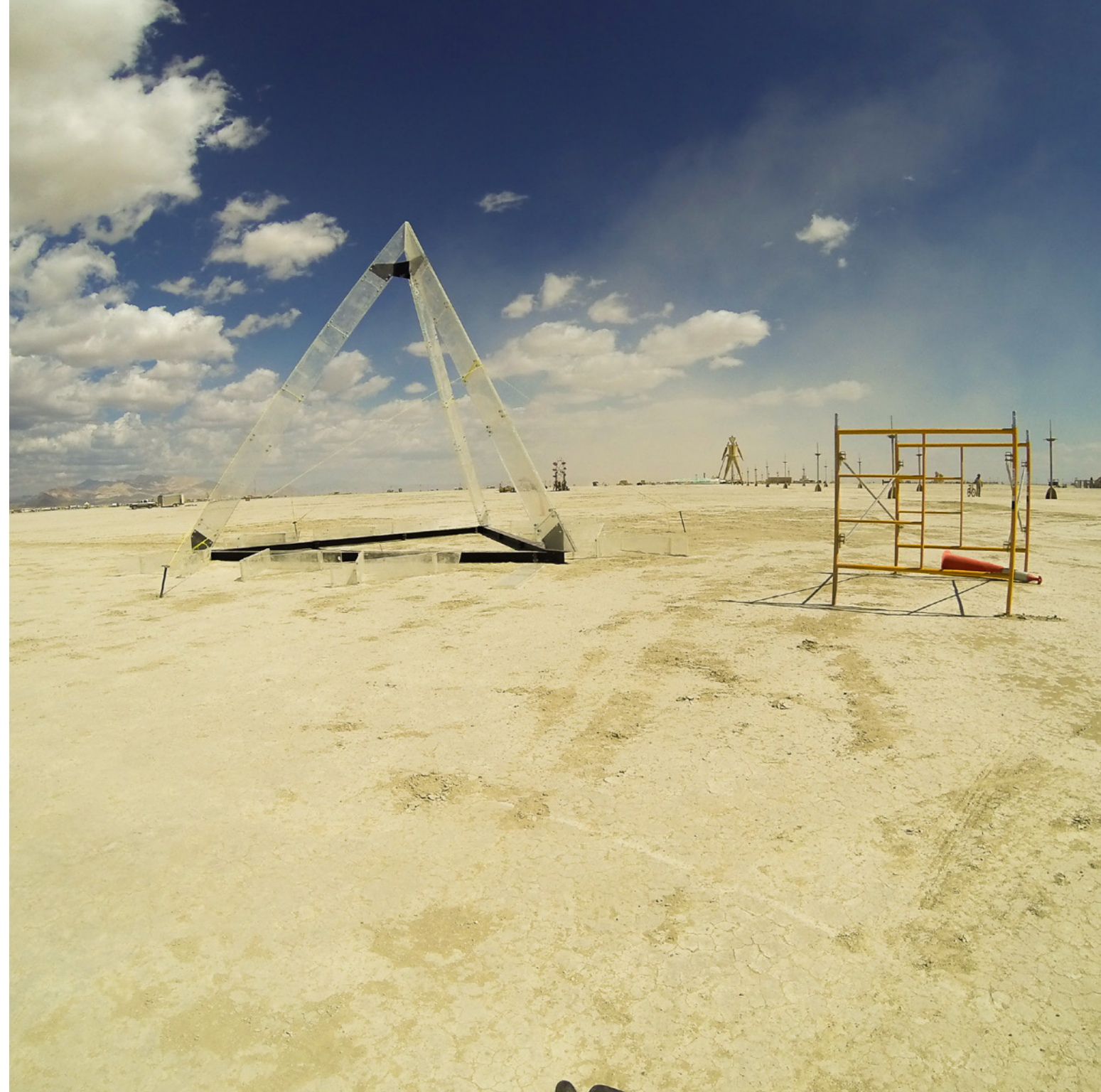


06

COMMUNICATIONS CONTROL SYSTEMS

Communication control is an essential, far reaching area of function part of any successful project. Coordination of interfaces between various systems that operate onsite between, both interdependent and inter-personal.

The areas of specialty are but not limited to pre-programmed and real time FX & theatrical lighting, DMX controls, personnel, radio communication, security control devices, interactive RFID controls.



07

MECHANICAL SYSTEM DESIGN

At heart of the unseen crucial roles of environmental conditioning, escalator & elevator conveyance, and plumbing operations mechanical systems play a vital role in the continuous unseen operations

We strive to develop and coordinate an appropriate lasting solution to integrate a functional stable & comfortable for your viewing audience. Consistency is key to maintaining works that are susceptible to environmental changes.



08

PYROTECHNIC DESIGN

We coordinate the management of pyrotechnics and special effects.

We create special effects for television, commercials, theatre, magazines and various other events. Fabrication, creation of wind, fire, snow, rain/water, explosions, blood bags, smoke/fog, rigging/flying, indoor pyrotechnics, bullet hit/ spark hits.





RESOURCES AND CAPABILITIES

09 Safety and Security Plans

10 Fire Suppression Design

11 Public Assembly Plans

12 Flame Spread Certification and Testing

13 Permanent and Temporary Work Plans

14 Under Writers Laboratory

SUMMARY OF EXPERTISE

We integrate necessary documentation and elements in order to present prescriptive systems that are cost-effective to install and maintain.

For challenging designs which involve life safety, property protection, mission continuity, heritage preservation, and environmental protection, our engineers develop a performance based design, which focuses on specific protection criteria.

Our capabilities include comprehensive expertise from schematic design to shop drawings.



09

SAFETY AND SECURITY PLANS

Safety and security plans are elaborated and considered during the schematic stage of the project. Experts from our team will put forth different options suitable for the project.

The services include a technical brief and development of strategy, design to incorporate safety and security plans in the scheme, procurement of materials and installation, and post installation assessment audit.

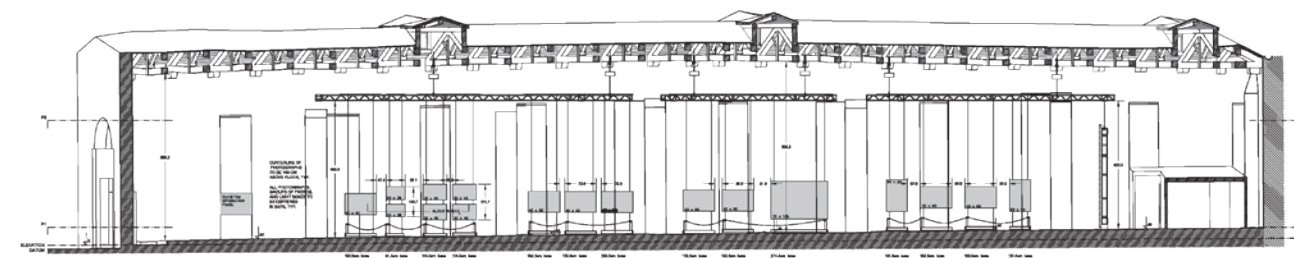
10

FIRE SUPPRESSION DESIGN

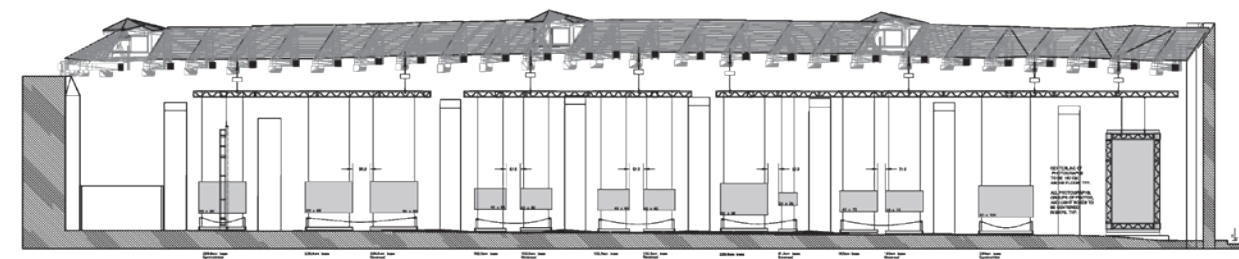
We provide solutions towards the strategy and design of fire suppression. Our expertise in fire suppression engineering include fire strategy design, integrated from ideation to completion, analysis of fire safety, structural engineering pertaining to fire to achieve efficiency, insurance and risk assessment, fire safety management strategies towards optimal operations.

11 PUBLIC ASSEMBLY PLANS

Our team works towards developing Public Assembly plans and garner their approval from the authorities. Geographic areas covered include: The United States, the United Kingdom, China, the Czech Republic, France, Gulf States, Italy and South Korea, where this task can be brought to fruition according to their respective guidelines and formats within the context of the build.



S1 WEST BUILDING SECTION - WEST EXHIBITION ELEVATION
SCALE: 1:1500



S2 EAST BUILDING SECTION - EAST EXHIBITION ELEVATION
SCALE: 1:1500

12

FLAME SPREAD CERTIFICATION AND TESTING

Understanding the reaction of the exposed materials to fire and its potential for spreading flames in the event of a fire is a key safety process. Materials require testing for fire resistance, flammability, and flame spread before their installation. We conduct certification tests such as ANSI/UL, ASTM, CAN/ULC and NFPA. Whether the requirements are industry related or aligned with association standards, we provide with custom testing for research, development and certification for your products.

ASTM E 84 (30 minute) - Standard Test Method for Surface Burning Characteristics of Building Materials.

ASTM E 119 - Standard Test Methods for Fire Tests of Building Construction and Materials.

ASTM E 2768 – Standard Test Method Extended Duration Surface Building Characteristics of Building Materials

UL 263 – Fire Resistant Rated Assemblies

NFPA 251 – Standard Methods of Tests of Fire Endurance of Building Construction and Materials

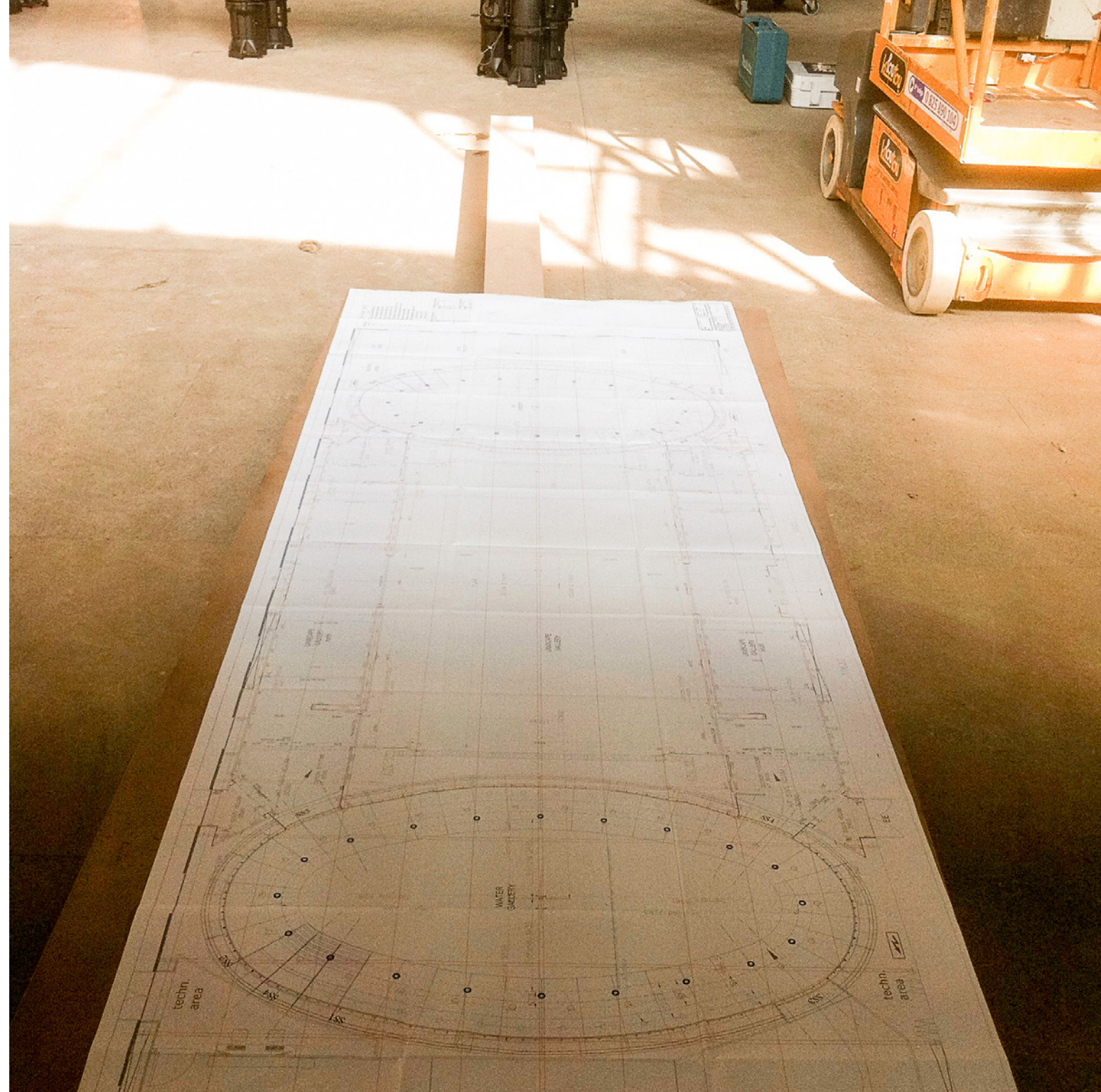
NFPA 286 - Standard Methods of Fire Tests for Evaluating Contribution of Wall and Ceiling Interior Finish to Room Fire Growth.

NFPA 703 – Standard for Fire Retardant Treated Wood and Fire Retardant Coatings for Building Materials

13

PERMANENT AND TEMPORARY WORK PLANS

Our services include logistical plans for repairing, relocating, removing of art works; strategies for the maintenance required in the afterlife of permanent works if hazardous, controversial, are vandalized or become irreparably damaged. Work plans will also include proposals for future projections of costs, life span and collection management.





We work in collaboration with the leading product safety testing and certification organization and provide Underwriters Laboratory Certifications.

The Underwriters Laboratory has developed 1,040 product standards and outlines, and actively participated in national and international standards development. It is recognized by American National Standards (ANSI) and reviewed through the UL Standards Technical Panel (STP). We support the vision of the client by providing a team of specialists in collaboration with the UL developing standards dedicated to the following types of equipment :

Electrical Components

Electronic Equipment

Wire and Cable

Appliances

Information Technology Equipment

Fire Protection Equipment

Fire Suppression Equipment

Signaling and Alarms

Equipment for use in Hazardous Locations

MISCELLANEOUS WORK

Interior and Exterior architectural lighting design.

Light level calculations and renderings

Lighting mock-ups and visualizations of lighting effect

Lighting fixture specifications and technical documents

Lighting layouts in AutoCAD and Revit

Custom fixture design

LED integration

LEED certification and energy code compliance

On-site services: lighting fixtures focusing, lighting control system start up and fine tuning at the end of the construction



CREW



JOSEPH PASTOR

Executive Director of Curatorial Outcomes

Mr. Pastor directs Curatorial Outcomes which brings under one roof the advanced capabilities and resources towards the execution of the construction of permanent architectural works, temporary installations and exhibitions in multiple international locations. Works have included: The Princeton Club of New York, the Plaza Athénée, I Magazzini del Sale, Venice, Italy; Musée du Louvre, Jardin des Tuileries and the Château de Versailles, France; Prague National Gallery, Czech Republic; and multiple works in New York City.



CHARLES A. MATZ

Principal

Principal of the firms, Executive Producer, Registered Architect, and Certified Interior Designer, Mr. Matz has extensive experience in the fields of architecture, planning, logistics, construction management, manufacturing, multi-media system direction and design, graphics, technology and entertainment systems.



JONATHAN DILLON

Planner

Mr. Dillon is Senior Project Executive, Planner, and Researcher, integrating digital technologies and workflows. He maintains, explores and expands the critical tradition and approach within the practice.



MITAALI KATOCH

Project Architect

Ms. Katoch is Project Architect and Designer for various integral works including the Princeton University Club of New York - planning and multiple area renovations, the Plaza Athénée Hotel in New York - planning, design coordination and Landmarks Preservation restorations, Worth & Worth by Orlando Palacios at the Turnbull&Asser Building, New York - retail store design at 52 East 57th Street.



ABIGAEI BALBUENA

Industrial Designer

Mr. Balbuena is the Firm's Industrial and Interior Designer, and Liaison for Central and South American projects development. He is a multidisciplinary practitioner, specializing in product, automotive, furnishings, security systems, solar technology design, media, and Fine Arts.



DAN CRANE

Content

Mr. Crane frames the Firm's image and sets the written content. He is a journalist and an author, writing about culture and travel for, the New York Times, the Wall Street Journal, California Sunday, Elle, Slate, The Daily Beast, Rhapsody, and other publications.

CHARLES MATZ
CURATORIAL OUTCOMES

Empire State Building
350 Fifth Avenue, 59th Floor
New York NY 10118 USA
ph: +1-212-601-2870
www.curatorialoutcomes.com